

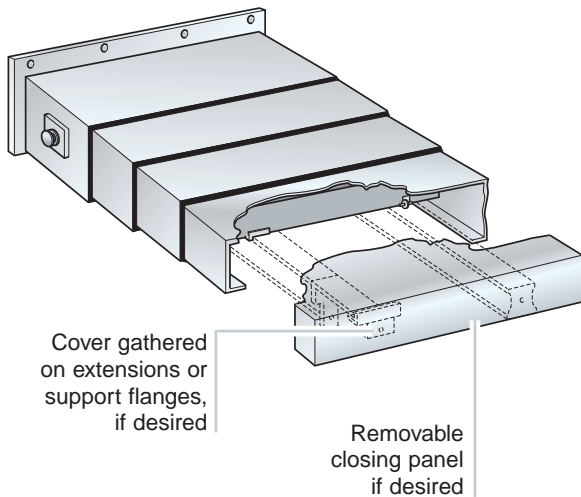
# TELESCOPIC STEEL COVERS

## Standard Products

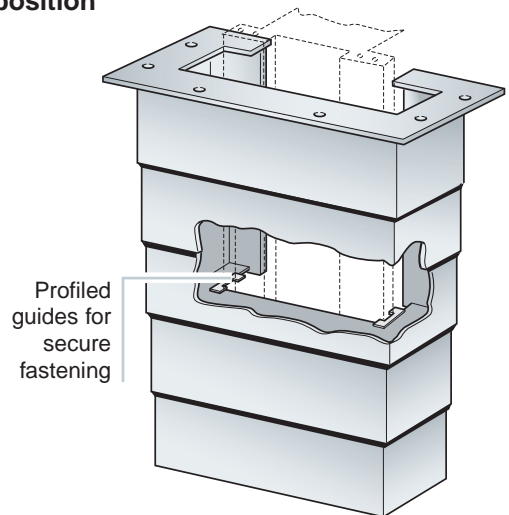
There are many companies throughout the world who manufacture or sell **Telescopic Steel Covers**. Our company has achieved production levels - in terms of volume and quality standards - that place it at the top of the market. Heavy investment in machinery and personnel training, under the guidance of highly qualified engineers have allowed us to face the latest challenge in the development of Machine Tools: the use of high speed linear motors and the increase of the axis speeds.

The quality of design and manufacture, often with patented shock absorbers, allow us to solve problems resulting from high speeds. At the same time, our company gives utmost consideration to the quality/price ratio, insuring that our customers get the most from their investment.

### Horizontal position

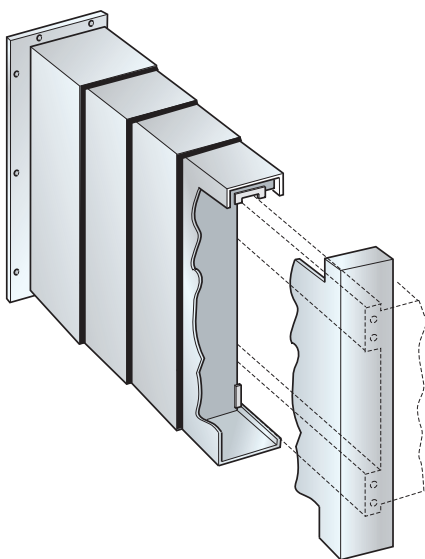


### Vertical position

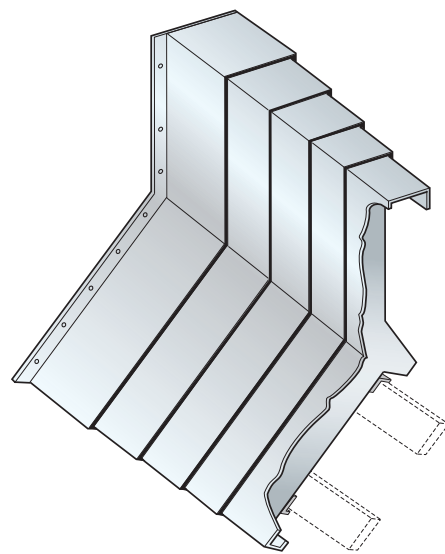


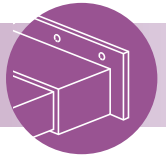
Snap-on guides available upon request for rapid frontal installation

### Transverse position



### Transverse LATHE cover





# TELESCOPIC STEEL COVERS

## Standard Products

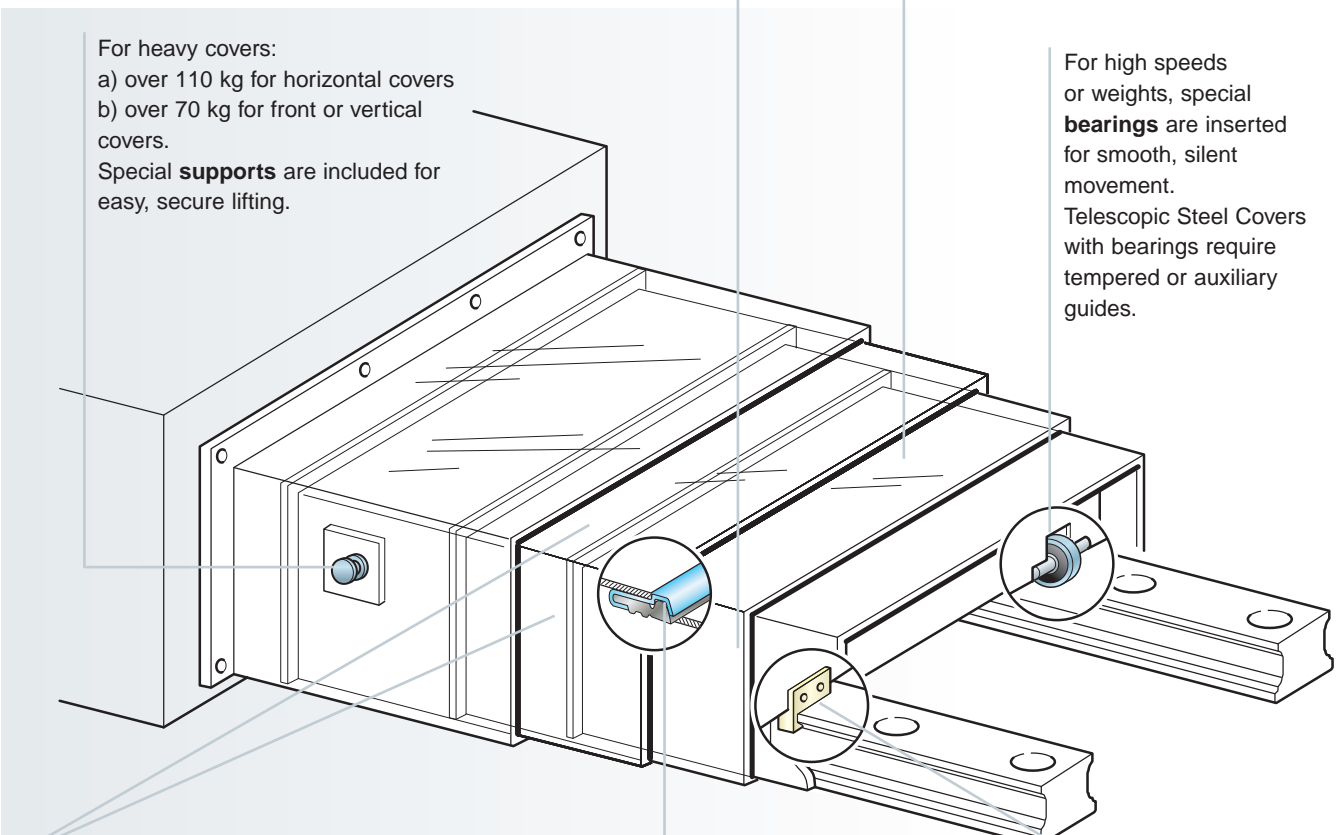
**Telescopic Steel Covers** are not simple products to manufacture. They require high-quality materials and components, as well as sophisticated manufacturing technologies. High movement speeds call for continuous innovation.

Special anti-friction **brass guides** or **wipers** with polyurethane rubber are inserted on the sides of the Telescopic Steel Covers, at the discretion of the engineer based on speed, seal and dimensions.

The **steel** used is extremely high quality in terms of flatness, corrosion resistance and wear resistance. Thickness ranges from 1.5 to 3 mm. Telescopic Steel Covers may also be made of stainless steel.

For heavy covers:  
a) over 110 kg for horizontal covers  
b) over 70 kg for front or vertical covers.  
Special **supports** are included for easy, secure lifting.

For high speeds or weights, special **bearings** are inserted for smooth, silent movement. Telescopic Steel Covers with bearings require tempered or auxiliary guides.

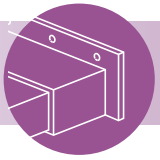


For high speeds, **P.E.I. shock absorbers** (patented) are inserted in these positions. They are very effective in reducing impact between boxes during movement. These shock absorbers allow working speeds considerably higher than those previously possible, while simultaneously reducing noise levels and wear. This innovation, together with precision production methods, make it possible to accommodate even the fastest machine tools.

**Wipers** keep the surface clean and prevent chips and shavings from getting onto expensive rails. They must be heat and coolant resistant, and thus are made of polyurethane, with or without a protective stainless steel chip guard.

Compact, low-speed Telescopic Steel Covers are equipped with special anti-friction brass or non-metallic **guides**.

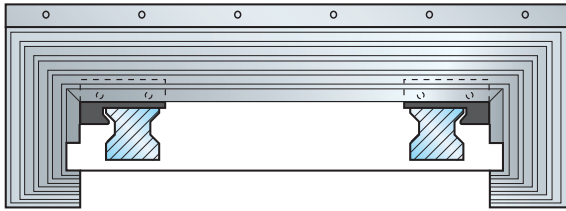
Reproduction of this page is strictly prohibited.



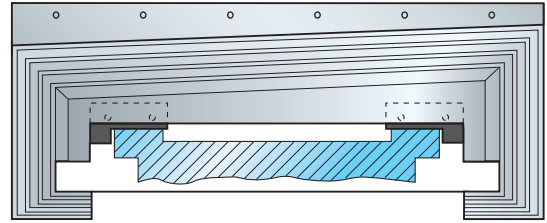
# TELESCOPIC STEEL COVERS

## CONFIGURATIONS

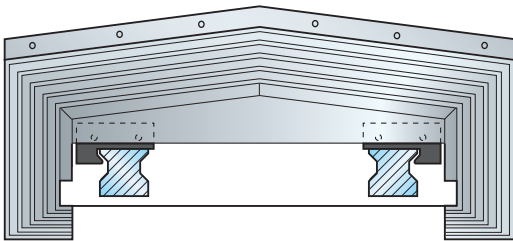
Shape 1



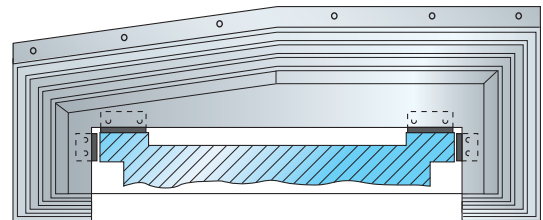
Shape 2



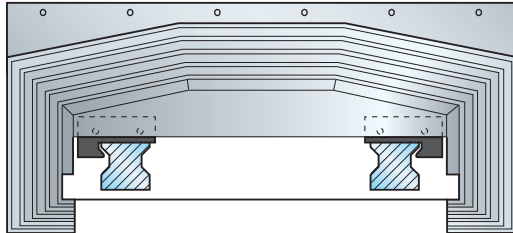
Shape 3



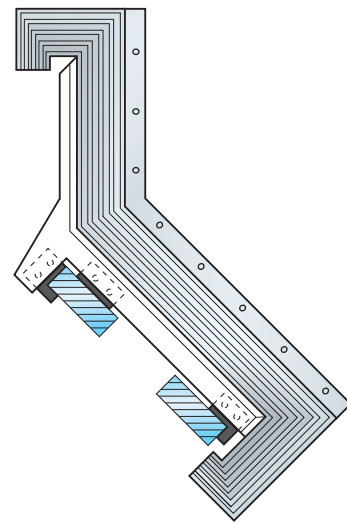
Shape 4



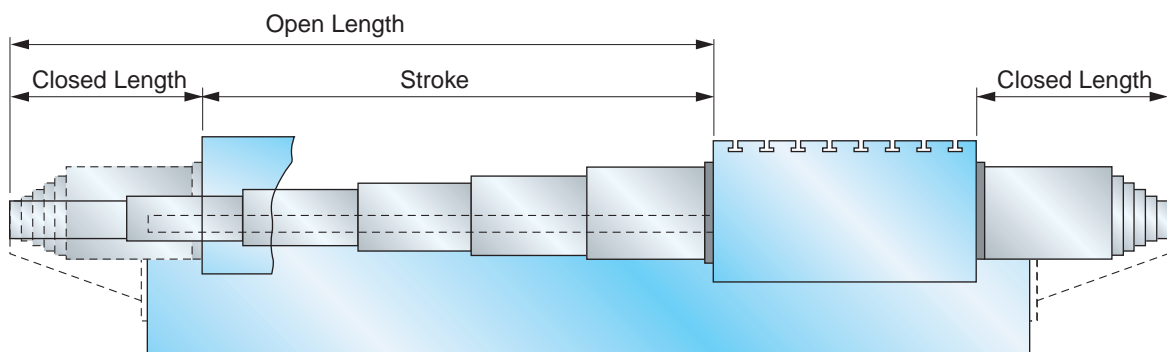
Shape 5

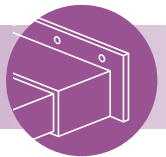


Shape 6



**NOTE:** Only a few standard configurations of Telescopic Steel Covers are shown above.





# TELESCOPIC STEEL COVERS

## TELESCOPIC STEEL COVERS QUESTIONNAIRE

**!** Type of machine: .....

Trade mark: .....

Model: ..... Axis: .....

Cover code: ..... Canister qt. ....

Acceleration: ..... m/sec<sup>2</sup> Speed: ..... m/min

Working Position  Horizontal  Vertical

Crosspiece  Inclined

Sliding  by skids  by rollers

Treadability  Yes  No

Coolant  Yes  No

**!** Customer:.....

Street:.....no. ....

Town ..... Land .....

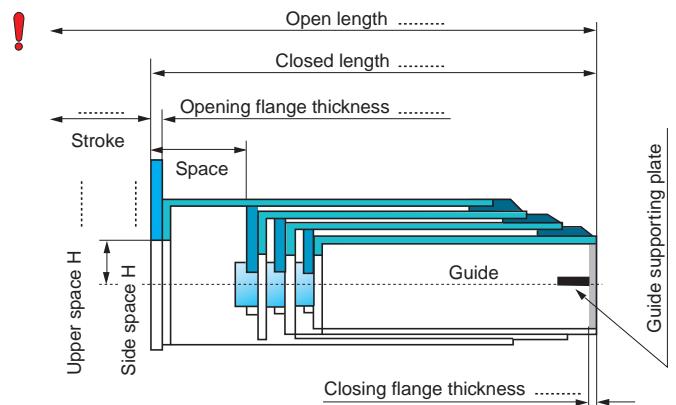
Reference person: .....

Phone: .....

Fax:.....

E-mail:.....

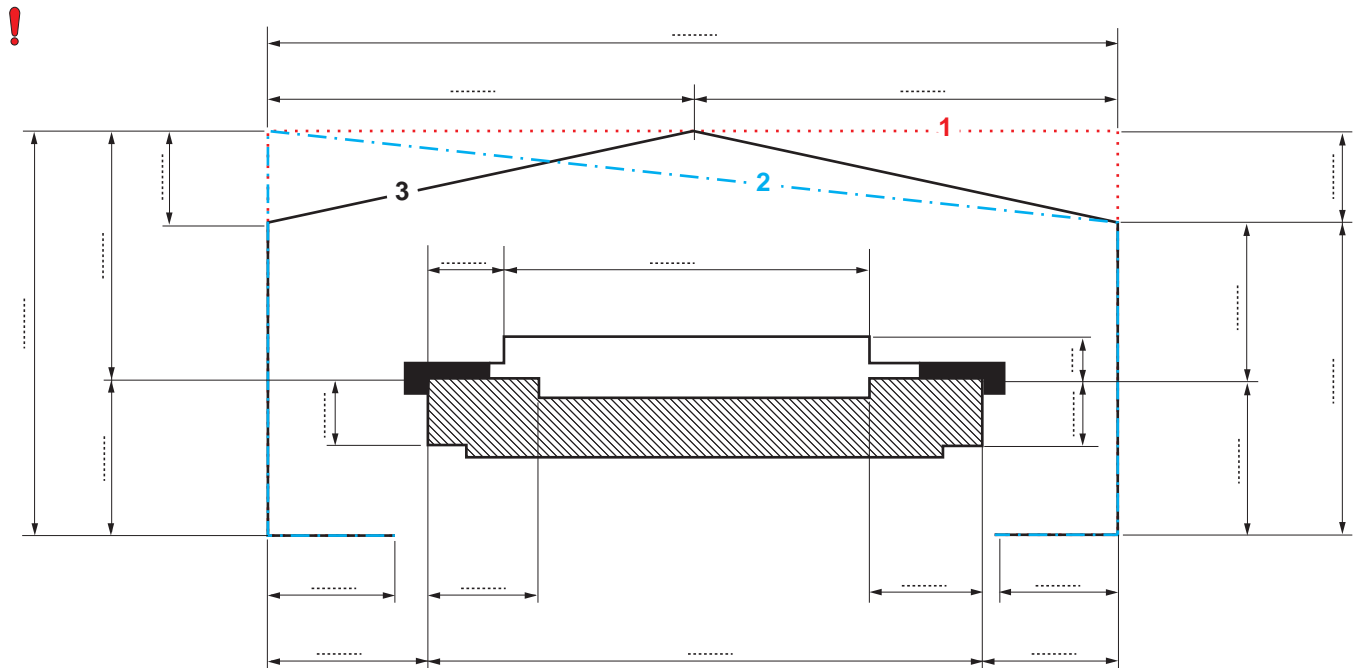
Required quantity Pcs:..... Right:..... Left:.....



**!** Please indicate the Cover overall, fastenings excluded.

Desired shape: 1  2  3

View from the opening flange  View from the closing flange



**!** Opening Flange sketch

**!** Closing Flange sketch

Reproduction of this page is strictly prohibited.

NOTE: The data fields and/or tables marked by **!** are required in order to give you a quotation.



**X-Y SP SHIELD** mounted by the Company PAMA S.p.a. in a mobile column type machining center. This **X-Y SP Shield** is composed by:

- Two telescopic steel covers with **AKS-1** roll-up cover on X-axis.
- A **Sheet-Pocket** telescopic steel cover on Y-axis.

**P.E.I. S.r.l.**

Via Torretta, 32 - 32/2  
40012 Calderara di Reno  
(Bologna) ITALY  
Tel.: +39-051/6464811 (r.a.)  
Fax: +39-051/6464840  
E-mail: [info@pei.it](mailto:info@pei.it)  
Sito Internet: [www.pei.it](http://www.pei.it)

**P.E.I. GmbH**

Freisinger Str. 32  
D - 85737 Ismaning  
GERMANY  
Tel.: +49-89/961094-0  
Fax: +49-89/961094-40  
E-mail: [info@pei-gmbh.com](mailto:info@pei-gmbh.com)  
Sito Internet: [www.pei-gmbh.com](http://www.pei-gmbh.com)